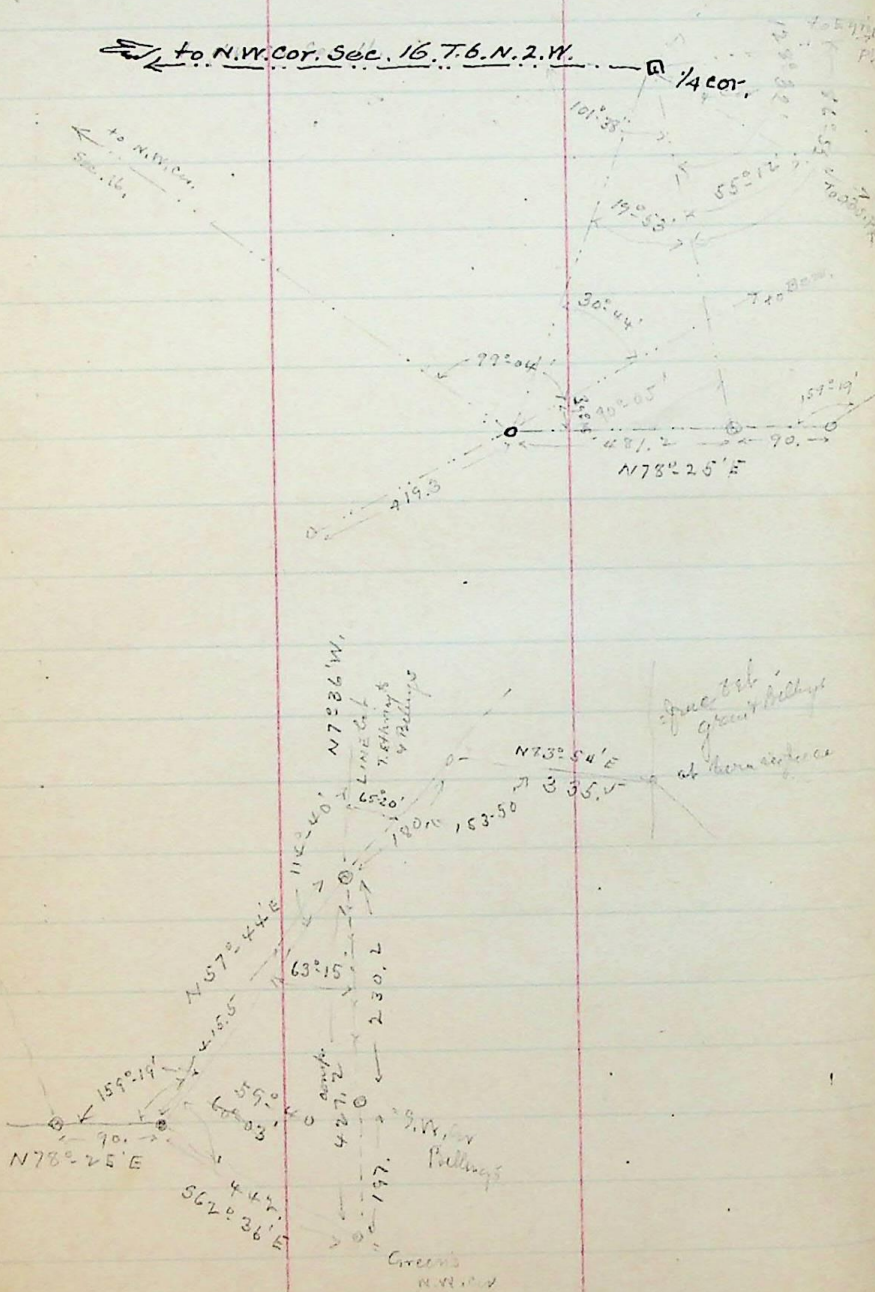


Dec. 4-1896

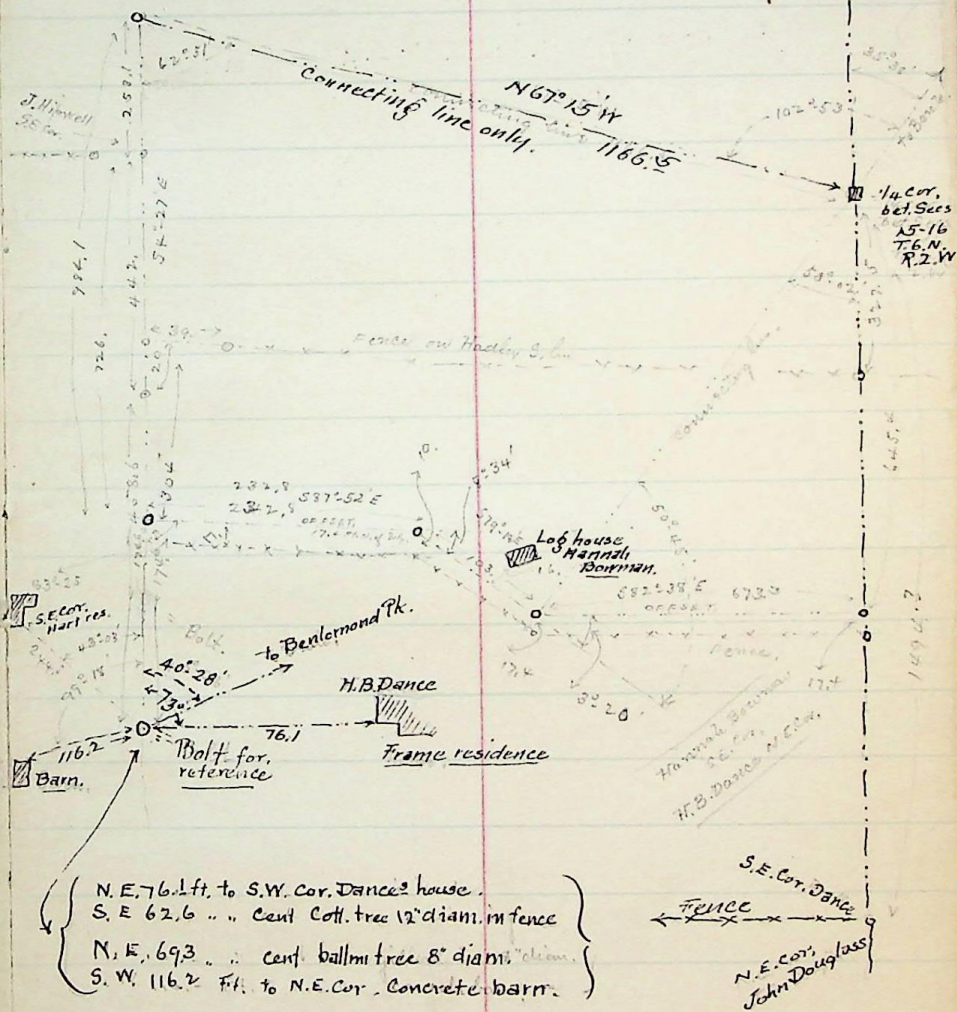
to N.W. Cor. Sec. 16 T.6.N.2.W.



Survey of School Sec. 16.
T.G.N. R.2.W.

Dec. 4-1896

(71)



N.E. 76.1 ft. to S.W. Cor. Dances house.
 S.E. 62.6 .. Cent. Cott. tree 12" diam. in fence
 N.E. 69.3 .. cent. ballm tree 8" diam. " "
 S.W. 116.2 Ft. to N.E. Cor. Concrete barr.

Traverse of Chas. Litterwood in Sec. 36 T.7.N-R.2.W

570°27'E	81.1	+	27.1	76.4
50°39'E	399.3		399.2	4.5
N59°07'W	93.1	47.8		79.9
N0°09'W	378.5	378.5		1.0
	426.3	426.3	80.9	80.9

av. .70 acres.